



## THE ANCHOR - HANDLING TUG SUPPLY VESSELS "GRANIT", "BAZALT"

Built: 1980, Szczecin Shipyard-POLAND  
type UT 704  
Class: PRS \* KM L3 A16 hoi (Ship  
arranged for fighting fires in offshore  
technical installation either floating or  
stationary)  
PRS reg. no: 210007, 210013  
Radio call sign: GRANIT SQKN  
BAZALT SQKO

### PRINCIPAL DIMENSIONS

Lenght O.A. 64,40 M  
Breadth moulded 13,80 M  
draft summerload 4,70 M  
Tonnage; Gross/Nett 1313 / 410 RT  
Accomodation: 12 passengers  
10-12 crew

### PROPULSION

Main propulsion: Two CP propeller  
Ulstein in Cort nozzles  
Two Main engines Nohab - Diesel  
type F216V-825D  
Auxilliary Machinery: 3 Mercedes-Benz  
type OM 404A  
3x335 kW generators Stamford  
Bow thruster Ulstein type 900TV -  
500HP funnel type  
Mercedes-Benz OM 404A  
Speed max /service: 16 kn/12 kn  
Fuel consumption: 16t/day/ 10t/day

### DECK EQUIPMENT

Cert bollard pull: 90 T  
Tow winch: Hydraulic Bratvaag  
typeSL 150W/B2T  
Two tow drums with 1200 m  
of 50 mm dia wires  
Deck machinery: Two tuggers winches  
typeWMA 1010 with  
120m wires dia 22 mm  
Windlass Hydraulic Bratvaag  
type B9-50-34 suitable for  
34 mm chain, 385 m each  
Deck crane SB: Twimor 4T/8M  
range 5 m over board (SB),  
1 storage reel on the deck 1000 m/dia  
55 mm wire  
Stern roller: 3,66 m long, dia 1,77 m

### NAVIGATION & COMMUNICATION EQUIPMENT

Radios: 1 SSB Skanti TRP 8402S  
2 VHF Sailor RT 2048  
Watch receiver 2182 Khz  
3 portable VHF Sailor SP  
3110(GMDSS)  
1 boat radio RS-103  
El navigator equipment: 1 GPS Furuno  
GP-70 Mark 2  
1 Shipmate RS-4000  
1 Navtex  
1 Facsimile  
Radar: 1 SRN-301 Rawar  
1 Furuno RDP-059

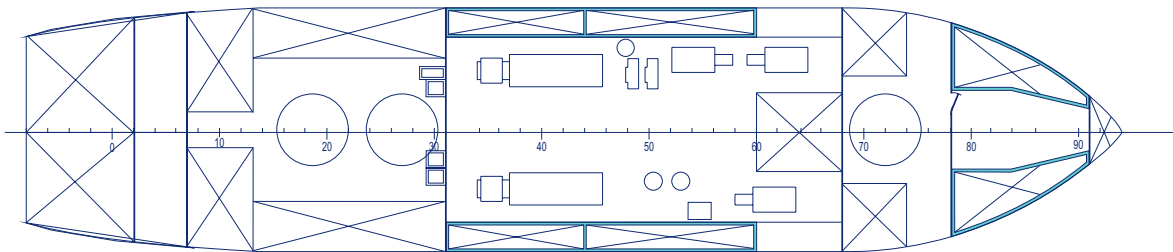
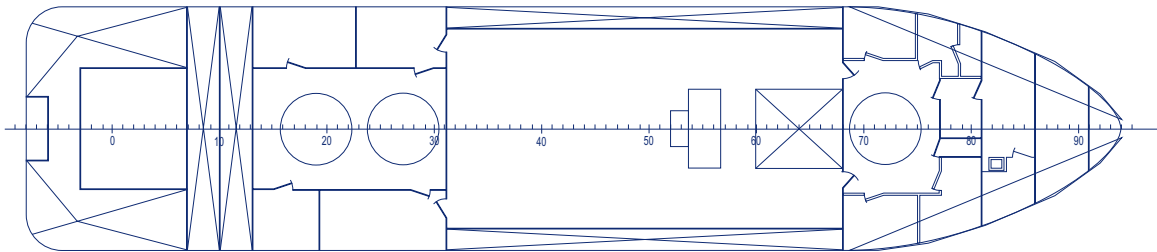
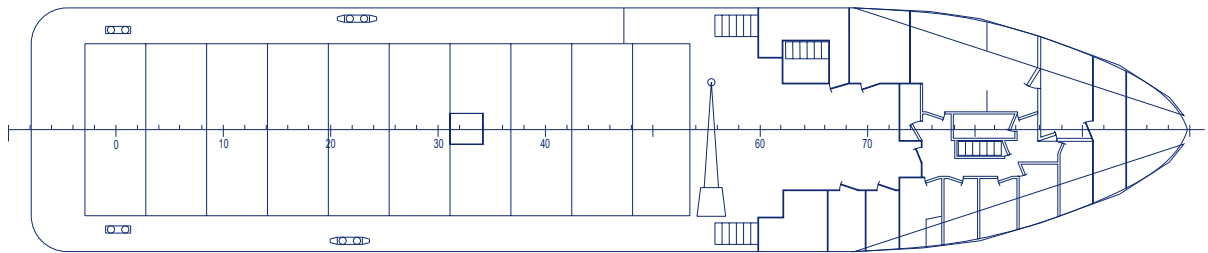
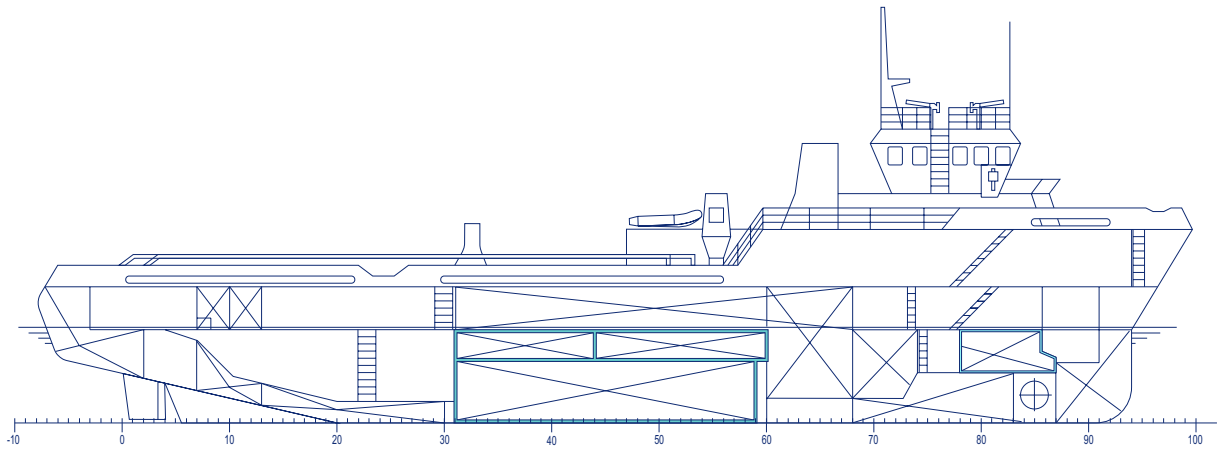
Gyro: Navigat II Plath  
Autopilot: ARC-1402  
Depth sounder: Radmor UP-4301

### CAPACITIES

DWT 1008  
Cargo deck: area 418 m<sup>2</sup>  
capacity 750 T; bearing load 5 T/m<sup>2</sup>  
dimensions L=38 m B= 11 m  
Bulk /barite/cement/ : 3 pressure tanks  
/1500cuteach/ 127 m<sup>3</sup>  
20t/hr at 30 m head  
Potable water: 240 m<sup>3</sup>  
60t/hr at 30 m head  
Technical water: 280 m<sup>3</sup>  
100t/hrat 30 m head  
Fuel/fuel cargo: 812 m<sup>3</sup>  
90t/hr at 30 m head  
Refrigerated storage:  
deep freeze 10 m<sup>3</sup>  
cooler 6 m<sup>3</sup>

### SPECIAL FEATURES

Meets MARPOL requirements  
Equipped with high speed rescue boat  
type LR-6, powered by Mercury 25 HP  
Working boat Sillinger type TRS 420UM,  
powered by Mercury 25 HP,  
2 foam/fire monitors on the top of the  
bridge, capacity 12 m<sup>3</sup>/hr, 600 m<sup>3</sup>/hr  
at 75 m head  
water curtain



**OIL AND GAS EXPLORATION PRODUCTION  
JOINT - STOCK COMPANY**

**PETROBALTIC**

